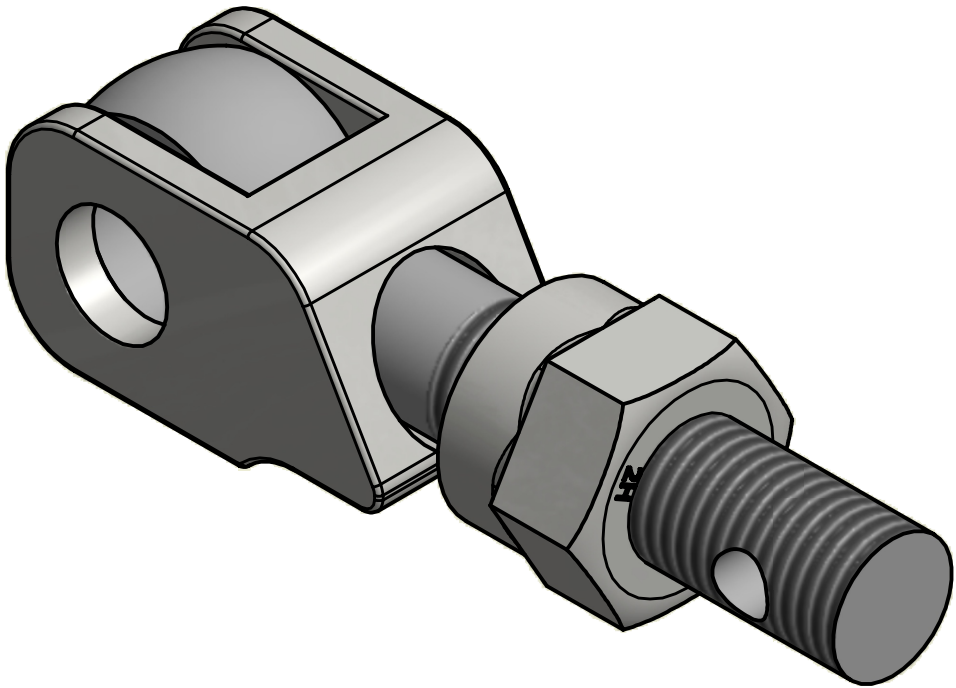
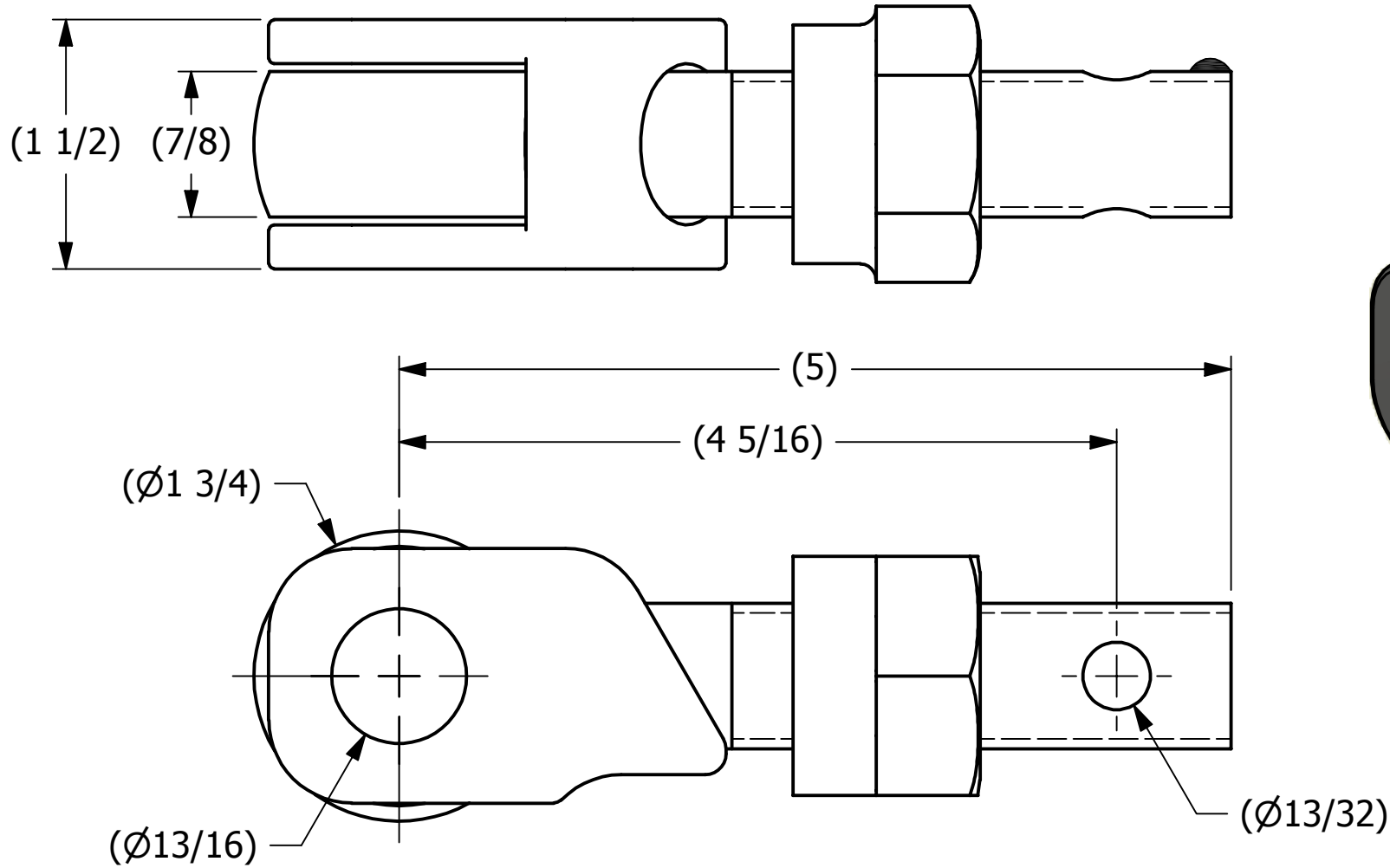


SALES DRAWING


SALES DRAWING



ISOMETRIC VIEW

B	RJP	11-19-15	UPDATED MARKING & TITLE BLOCK
A	CHL	9-29-08	NEW PART ADDED TO SYSTEM
REV	BY	DATE	DESCRIPTION

UNLESS OTHERWISE SPECIFIED DIMENSIONAL TOLERANCES	DRAWN BY:	CHL
FRACTIONAL: $\pm 1/16$	CHECKED BY:	WRB
X.XX: $\pm .03$	PROTOTYPE BY:	CHL
X.XXX: $\pm .015$	PROTOTYPE DATE:	9/29/2008
ANGULAR: $\pm 1^\circ$	APPROVED FOR PRODUCTION BY:	WRB
DEBURR ALL SHARP EDGES. ALL MACHINED SURFACES TO HAVE A 125 RMS FINISH UNLESS NOTED OTHERWISE.	PRODUCTION DATE:	9/29/2008
THIRD ANGLE PROJECTION		

 SALCO PRODUCTS, INC.		
PART NAME: EYEBOLT ASSEMBLY 7/8"X5"		
MATERIAL: ASTM A449 TYPE 1, CARBON STEEL		
PROJECT #: WAG095	SHEET #: 1 OF 1	SCALE: 1:1
DRAWING #: B26023	PART #: EB785XSNHAG5SC	

THIS PRINT, PROPERTY OF SALCO PRODUCTS INC., CONTAINS PROPRIETARY INFORMATION
AND MUST NOT BE COPIED, REPRODUCED, OR USED DETRIMENTALLY TO OUR INTEREST.